



Increased capacity with a unique Orthopaedic surgery and ward expansion

Three storey modular orthopaedic theatre and ward complex, comprising 4 laminar flow theatres, recovery area and a 20 bed ward has rapidly increased available NHS and Private Patient capacity.





'No Capital' Solution:

- The facility was provided as part of a long term rental agreement, allowing the trust to significantly increase capacity and occupy the complex without any capital outlay
- The monthly hire rate includes costs for the facility itself, all associated equipment and site enabling costs
- Provided on a 10 year Managed Services Agreement

Scope of Services:

- Liaison with end users to produce design and specifications
- Complete facility and M&E designs, manufacture and construction drawings
- Manufacture of modules and plantrooms in the factory
- Delivery and installation
- Commissioning
- Flexible finance option

Benefits:

- Rapid method of construction from order to handover, built in only 17 weeks prior to delivery in a single weekend
- A drastic reduction in site construction activity, leading to fewer deliveries, reduced noise, less environmental impact and increased site safety
- High levels of build quality, due to construction and testing in factory conditions and enhanced quality control

Contact us to discuss your requirements...



For semi-permanent and lease hire options contact

0151 556 0411

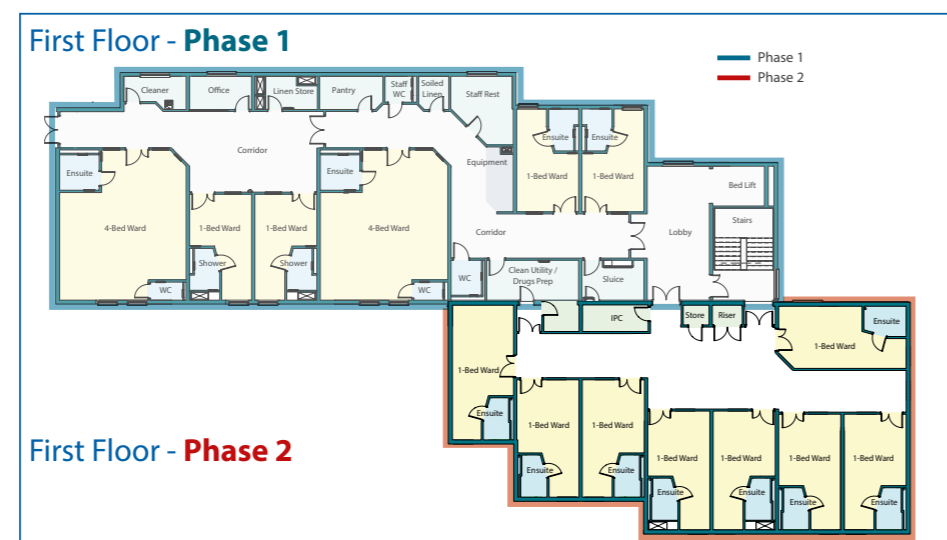
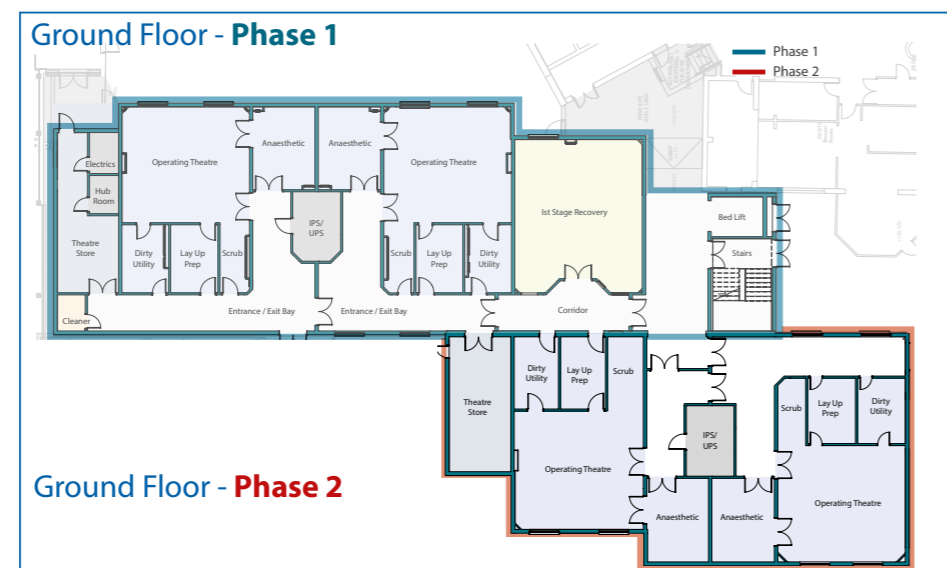
The Royal Orthopaedic Hospital Orthopaedic Theatres, Recovery and 20 Bed Ward

The hospital offers elective surgery to local, national and international patients and ranks among the highest in the NHS for positive patient experience, with a 96% recommendation rating.

But a major issue for them was that aging ventilation plant, and an older non-resilient engineering design meant the Trust could lose the use of all their theatres simultaneously, an unacceptable risk for them. The ROH NHS Trust were determined to uphold their reputation and provide a consistent service, so a permanent solution was required to remove the risk of their theatres being unavailable.

As one of the largest orthopaedic units in Europe, minimising disruption to the everyday function of the hospital was essential when considering the construction of additional capacity. They considered off-site construction was the best method to continue delivering exceptional patient care.

ModuleCo Healthcare (MCH) and ModuleCo are experts in delivering bespoke modular buildings and the talented team worked closely with decision-makers at the hospital to ensure the quality of product and speed of delivery exceeded expectations.



Contact us now: sales@healthcarehire.co.uk

Visit us at: www.healthcarehire.co.uk

Hire & Managed Service Solutions

ModuleCo Healthcare have been providing alternative procurement solutions to healthcare providers for twenty years.

Hire solutions can be tailored with available budget in mind, and the period of hire can be structured from 12 months to 15 years. A fully managed service option can also be provided which offers the facility, combined with the provision of hard and soft services.

For our public sector clients, we understand the requirement for finance solutions to be classified as 'off balance sheet'.

You can benefit from extensive knowledge of accounting standards (including IFRS and IAS17) and a long history of working with public sector auditors assuring our solutions adhere to your requirements.



NHS Approved Procurement Frameworks

ModuleCo Healthcare is an accredited supplier on the NHS Shared Business Services Framework (SBS), the Crown Commercial Service Framework (CCS) and the NHS Commercial Solutions Framework (NHSCS) for the purchase and hire of bespoke modular healthcare buildings.

Our accreditations mean that you can fast-track the procurement exercise for each one of our facilities using any of these OJEU compliant frameworks, removing the need for a lengthy and expensive tender process.

	<p>Crown Commercial Service Supplier</p>	
---	--	---